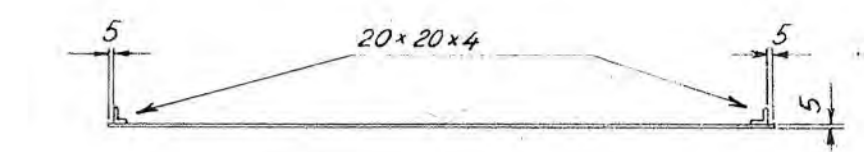
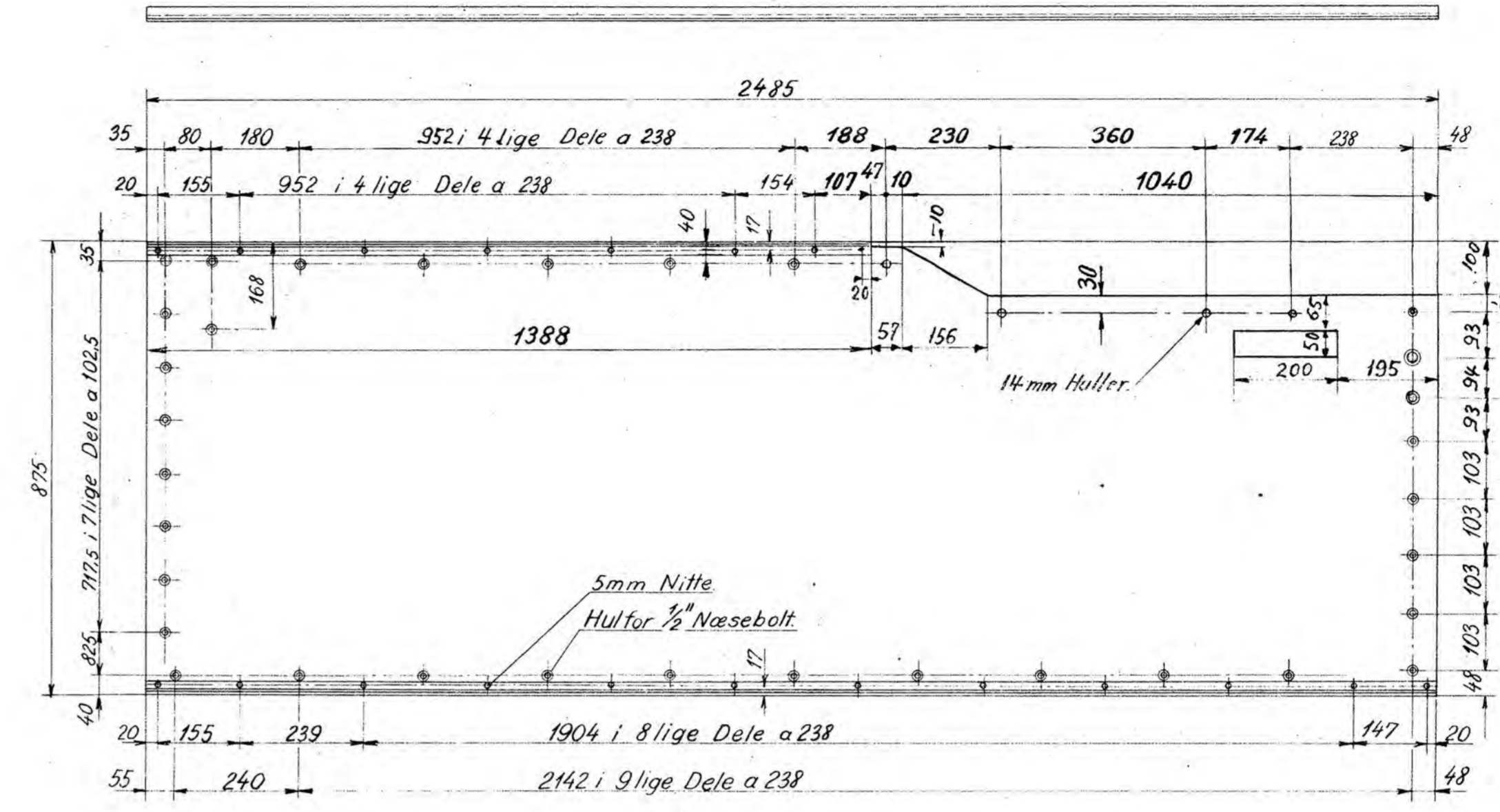
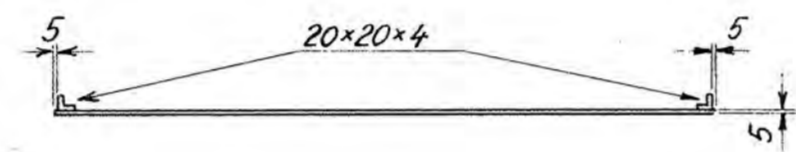
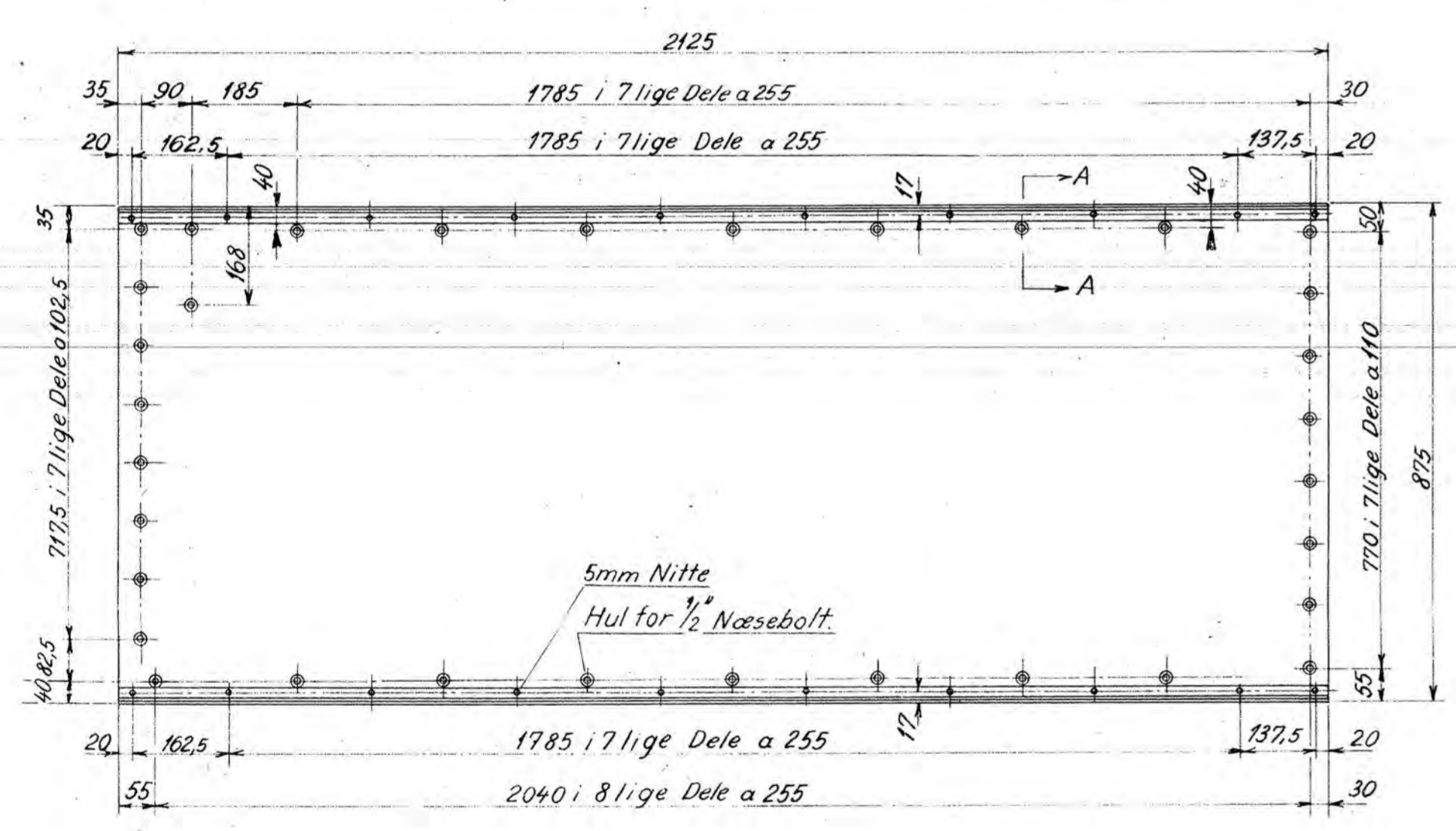


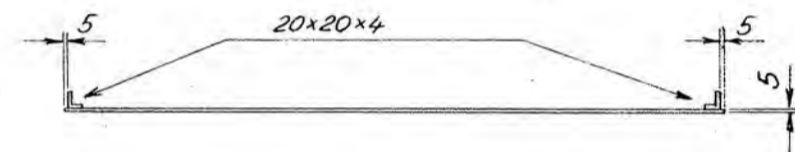
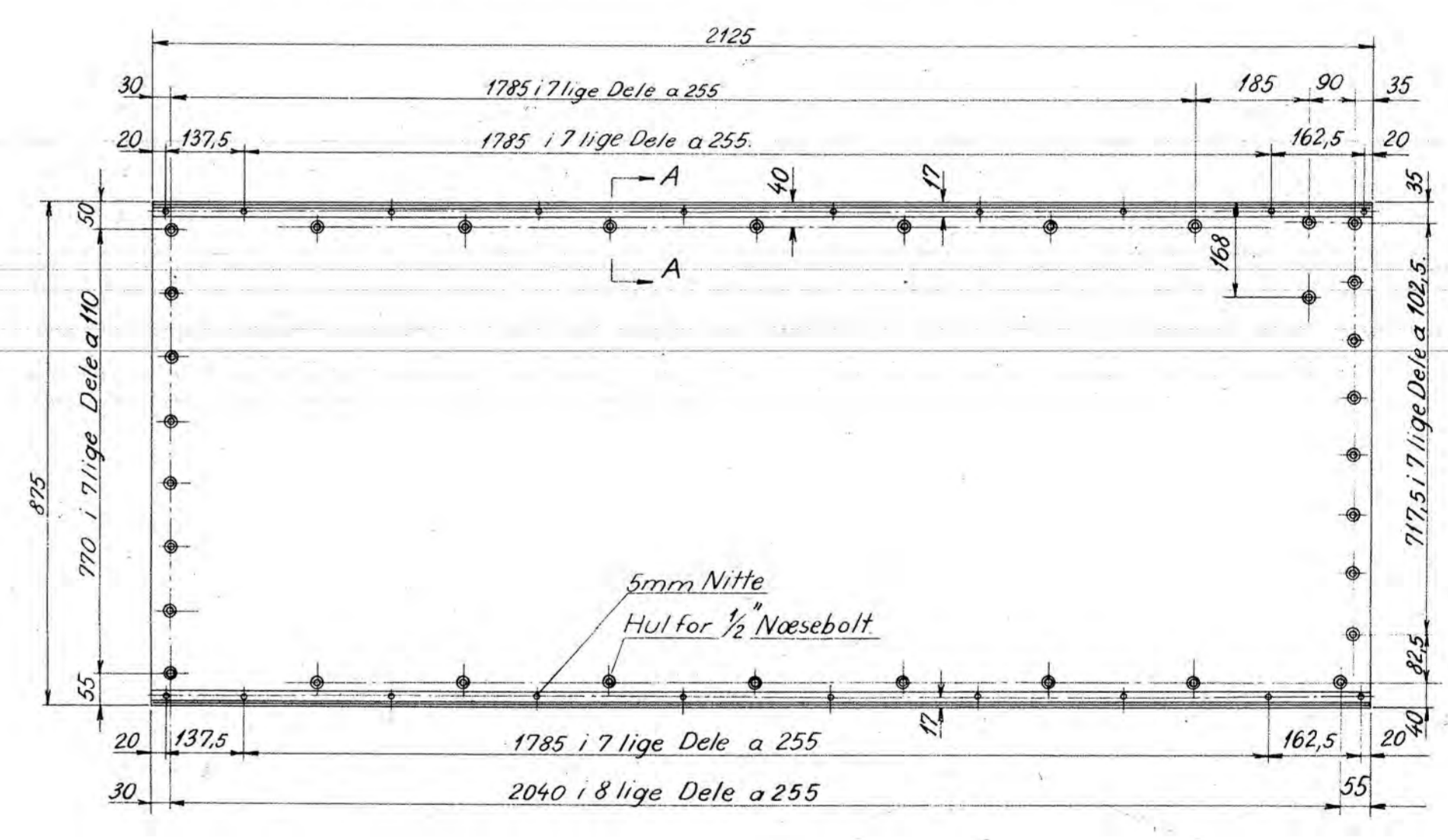
Pr 82e	Pos. 12	Plade, højre	15Stk.	1:10
Rev.		Dørkplade, L. 20x20x4.		



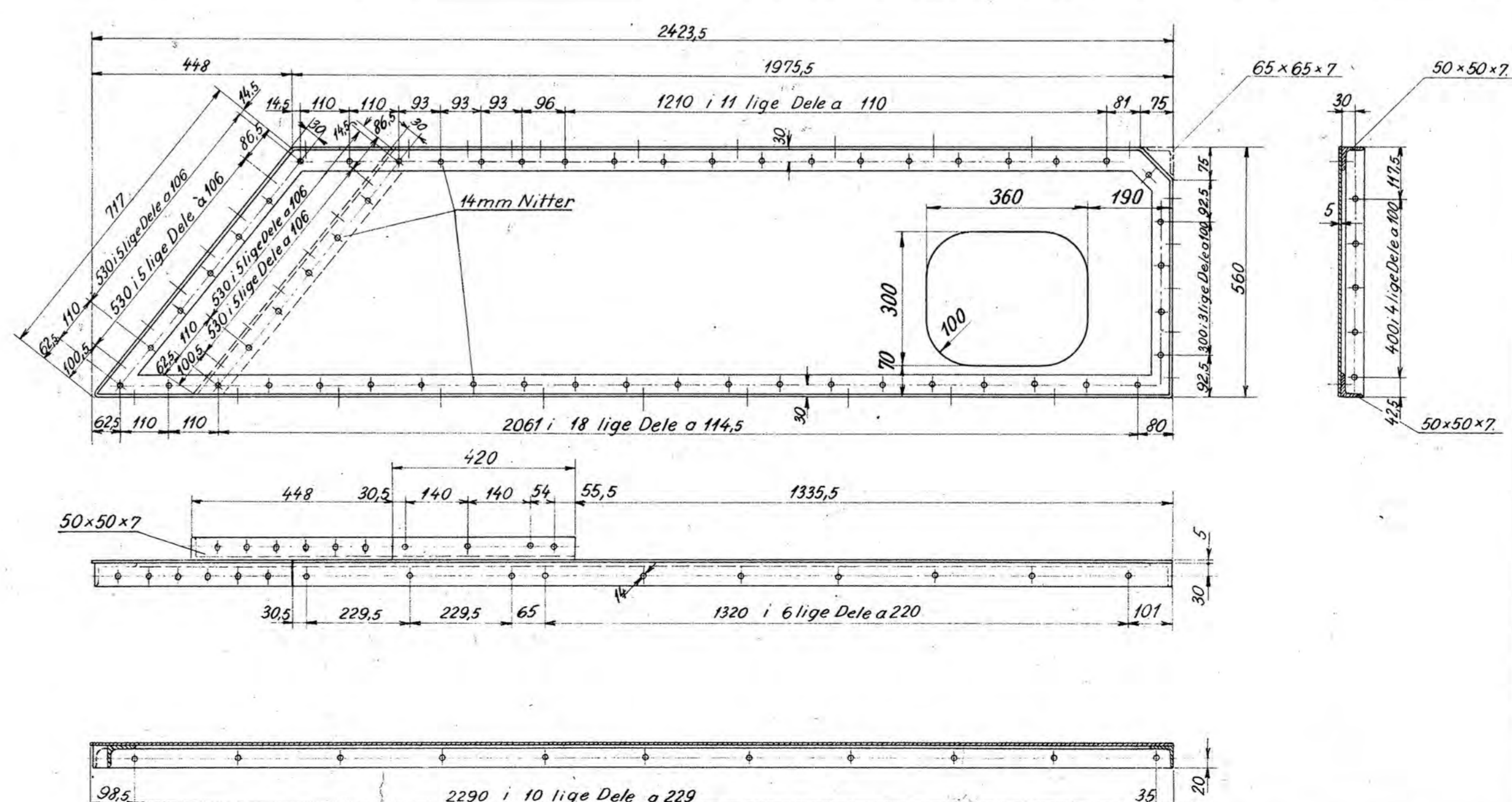
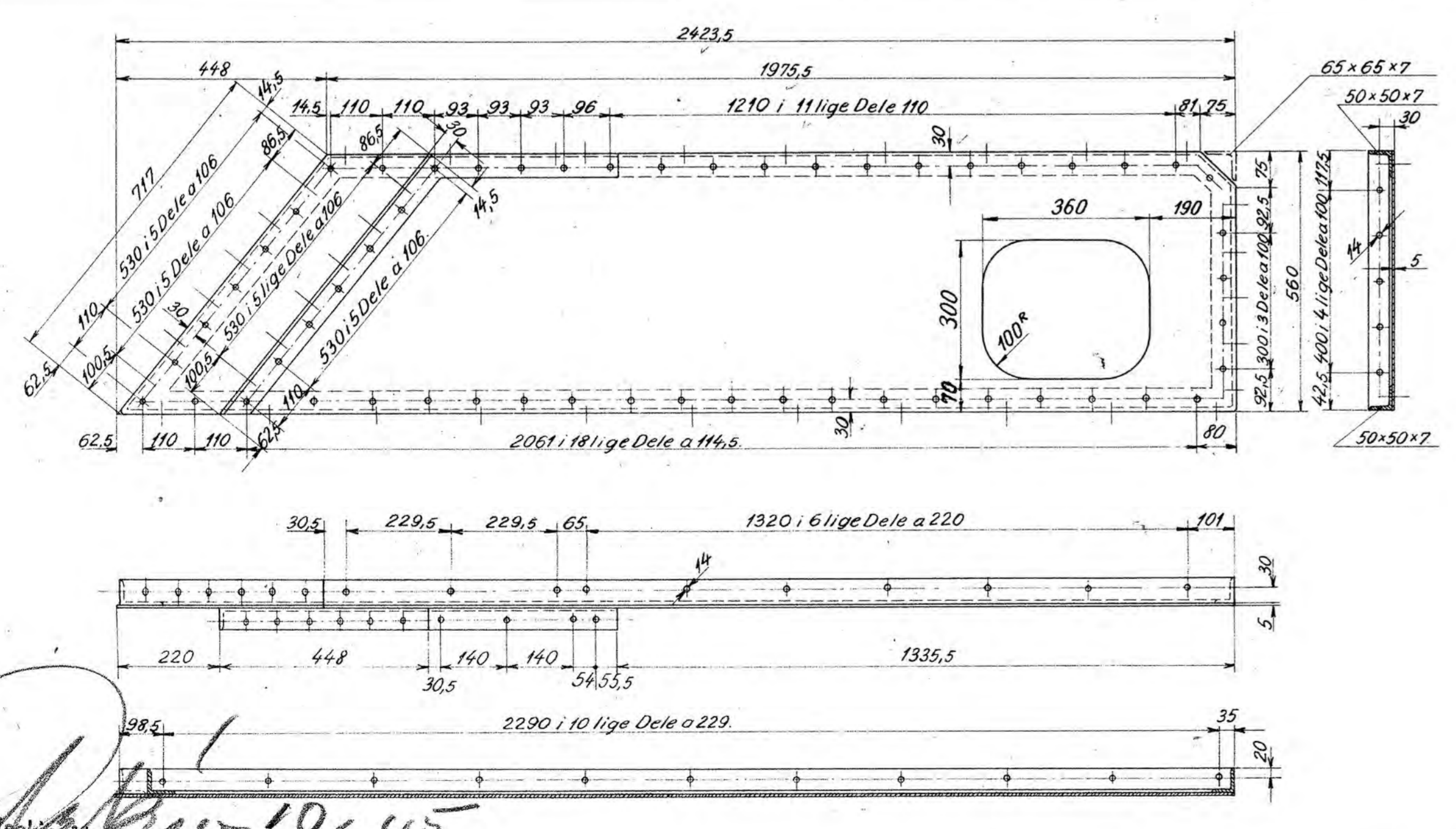
Pr 82e	Pos. 11	Plade, venstre	15Stk.	1:10
Rev.		Dørkplade, L. 20x20x4.		



Pr 82e	Pos. 14	Plade højre	15Stk.	1:10
Rev.		Dørkplade L. 20x20x4		



Pr 82e	Pos. 13	Plade, venstre	15Stk.	1:10
Rev.		Dørkplade L. 20x20x4		



Pr 82e	Pos. 15	Plade venstre	15Stk.	1:10
Rev.		Flussj		

Pr 82e	Pos. 16	Plade, højre	15Stk.	1:10
Rev.		Flussj		

1	Plade	16	Flussj
1	do.	15	do.
1	do.	14	do.
1	do.	13	do.
1	do.	12	do.
1	do.	11	do.
Styk/tal.	Genstand	Nr.	Material
Forandringer:	Kalk og Rev.	26/3-43	27/1
	Pos. 11 og 12 ændret	A	14-93
	Hul i Træk til Ask-kasse	B	2 1/2 44
	Indf. i Pos. 11	C	24-3-45
	Pos. 11, 12, 15 og 16 ændret		
De danske Statsbaner			Maalestok Tegn. 6-11-42, Paleb.
Maskinafdelingen.			1:10 Kalk 18-2-43 7.I.A.
Detaller af Afstivning og			1:1 Godk 1/2 43 E.S.
Fodpladens mellemste Del.			A B C
Loko Litra PR.			PR.82e.

10/4 45
 Maskinafdelingen
 ved
 Centralstationen
 København.